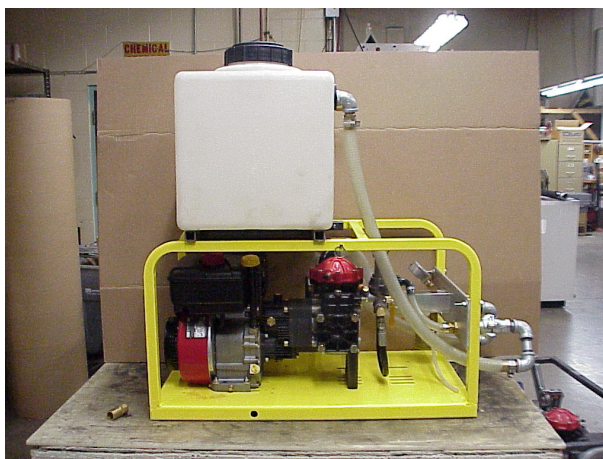


**INSTRUCTIONS**  
**WATER TANK CONVERSION**  
**NEW AND OLD STYLE DIAPHRAGM PUMP**  
**TECUMSEH AND HONDA**

NOTE: THE OLD STYLE PUMP REQUIRES WHEEL KIT #013-808 TO ALREADY BE INSTALLED.  
CONSULT CHERNE CUSTOMER SERVICE FOR MORE INFORMATION



CHERNE INDUSTRIES INCORPORATED  
5700 Lincoln Drive  
Minneapolis, MN 55436-1695

1-800-THE-PLUG  
(1-800-843-7584)  
Fax: 1-800-843-7585  
[www.cherneind.com](http://www.cherneind.com)

## Parts list

1	002-895	1	Reducer, Hex, ¾ MPT X ½ FPT
2	022-788	2	Coupling, ¾ FPT X 2 Lug
3	006-282	3	Washer, ¾", Rubber, 3/16" Thick
4	040-468	2	Washer, 2.25 OD X .937 ID X .170 Thick
5	022-818	4	Adapter, ¾ NPT X 1" HB
6	022-698	2	Nipple, ¾ NPT X 2.5" Long, Galvanized Steel
7	023-268	.17	Loctite, Thread Sealer, RD#545, 50 ml
8	040-448	6	Washer, 2.00" OD X 1.062" ID X .140" Thick
9	030-178	4	Clamp, Stainless Steel Hose, .75"-1.5" Diameter
10	030-188	5.58'	Hose, Suction, Smooth, PVC, 1" ID
11	052-272	4	Nipple, ¾ NPT, Close
12	039-048	1	Mounting Rack, Water Tank
13	039-058	1	Water Tank, 16 Gallon, Metal Inserts
14	039-118	4	Screw, 5/16-18, Socket Head Cap
15	039-128	1	Mini-lever Arm Float Valve Assy, ½ MPT X 3/8 Tube
16	039-148	2	Pin, Positive Locking, 5/16 Diameter X 2.2" Grip Length
17	052-264	8	Elbow, 90 Degree, ¾ FPT X ¾ FPT
18	054-267	1	Connector, ¾ FPT X Female Garden Hose
19			
20			Packaging
21			Packaging
22	039-398**	1	Frame, Water Tank Mounting, Conversion Kit
23	039-558* **	6	Bolt, MHH, 5/16-18 X 2.75"
24	000-043* **	12	Washer, Flat, 5/16
25	000-930* **	6	Nut, 5/16-18, Self Locking
26			Packaging
27			Packaging

\* These parts are shipped loose in a plastic bag. All other parts are already assembled.

\*\* These parts are not used on the new style pump

## Features

16 gallon capacity tank

Automatic bypass back into tank.

Can be used as a stand alone tank or be hooked to outside water source.

Built in float valve in tank. When hooked to outside water source, tank will be refilled when low.

Tank assembly tilts for access to gas and oil.

Tank assembly can be removed quickly by removing 4 quick release pins.

Clear hose for flow conformation.

### Installation (old style pump)

1. Remove all parts from shipping carton. Remove quick release pins from water tank frame.
2. Set new frame on to pump. Attach new frame to handles using the supplied bolts, nuts and washers as shown (Figures 1 and 2)
3. Set tank assembly on top of new frame as shown (Figure 3). Make sure the hoses are inside the frame.
4. Line up the holes on the new frame and the water tank frame. Install quick release pins as shown (Figure 4).
5. Attach color codes hoses from tank to pump.

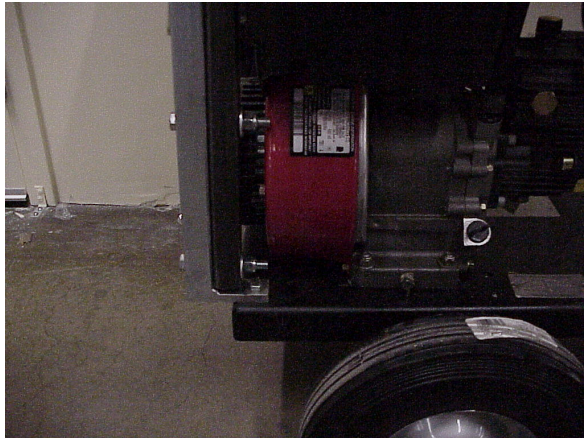


Figure 1

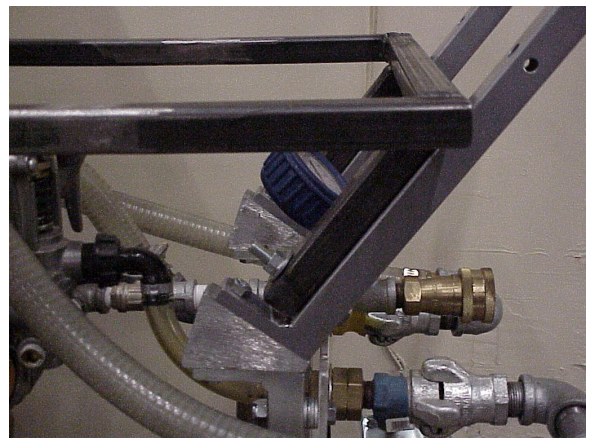


Figure 2

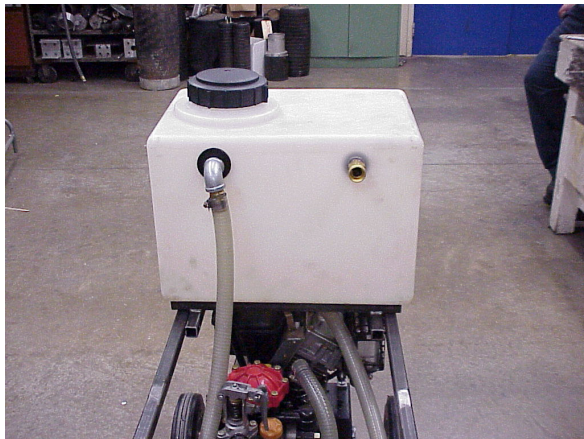


Figure 3

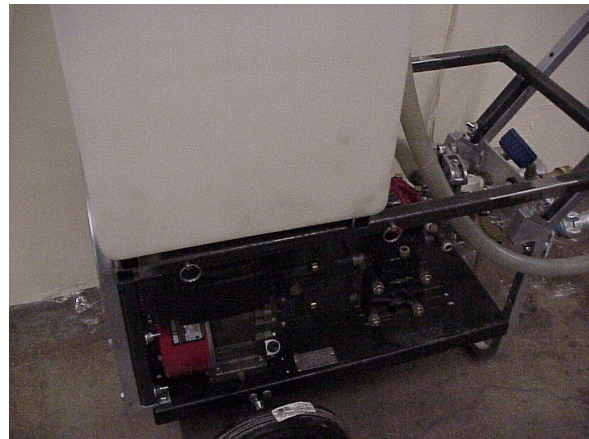


Figure 4



## Installation (new style pump)

1. Remove all parts from shipping carton. Remove quick release pins from water tank frame.
2. Set tank assembly on top of pump as shown (Figure1). Make sure the hoses are inside the frame.
3. Line up the holes on the new frame and the water tank frame. Install quick release pins as shown (Figure 2).
4. Attach color codes hoses from tank to pump.

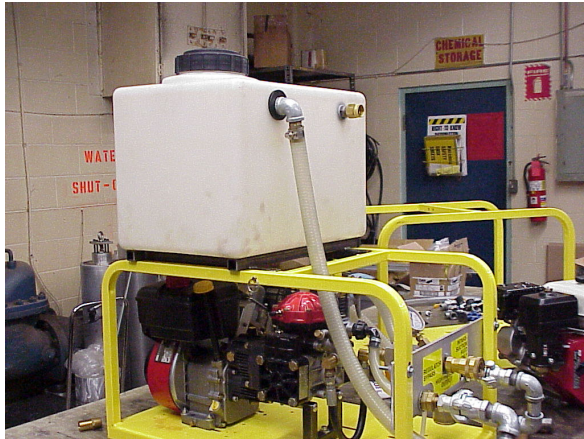


Figure 1

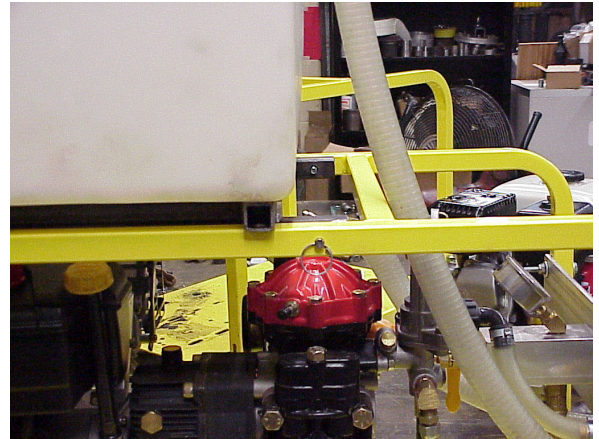


Figure 2

## Set up and operation

The water tank assembly is designed to act as a stand alone water source or as an attachment point for a continuous water source. When hooked up to a continuous water source, a valve in the tank will open and refill it when the tank drops below a preset level. The pump bypass is hooked to the tank to minimize water loss. All bypassed water goes back into the tank. After filling tank with water, refer to the pump manual for operating instructions.

**LIMITED WARRANTY**

Manufacturer warrants all products manufactured by it will be free from defects in material and Workmanship for one (1) year following the date of manufacture. If any of the goods are found to be defective, such goods will, at manufacturer's option be replaced or repaired at manufacturer's cost. The parties hereto expressly agree that buyer's sole and exclusive remedy against the manufacturer shall be for the repair or replacement of defective goods as provided herein. (The sole purpose of the stipulated exclusive remedy shall be to provide the buyer with free repair and replacement of defective goods in the manner provided herein. The exclusive remedy shall not be deemed to have failed of its essential purpose so long as the manufacturer is willing and able to repair or replace defective goods in the prescribed manner.) Goods which may be sold by manufacturer but are not manufactured by it are not warranted by manufacturer, but are sold only with the warranties, if any, of the original manufacturers thereof. (This warranty does not cover labor or other costs or expenses to remove or install any defective, repaired or replaced goods.) Manufacturer's warranty does not apply to any goods which have been subjected to misuse, mishandling, misapplication, neglect (including but not limited to use of unauthorized parts or attachments), or adjustment or repair performed by anyone other than manufacturer or one of manufacturer's authorized agents.

Any claim by buyer with reference to the goods sold hereunder shall be deemed waived by the buyer unless submitted in writing to manufacturer within the earlier of (1) thirty (30) days following the date buyer discovered or by reasonable inspection should have discovered, any claimed breach of the foregoing warranty, or (2) thirteen (13) months following the date of manufacture. Any cause of action for breach of the foregoing warranty shall be brought within one year from the date the alleged breach was discovered or should have been discovered, whichever comes first.

**LIMITATION OF LIABILITY.** Manufacturer's liability (whether under the theories of breach of contract or warranty, negligence, or strict liability) for its goods shall be limited to repairing or replacing parts found by the manufacturer to be defective, or at manufacturer's option, to refunding the purchase price of such goods or parts thereof.

**DISCLAIMER OF CONSEQUENTIAL DAMAGES.** In no event shall manufacturer be liable for consequential damages arising out of or in connection with this agreement, including without limitation breach of any obligation imposed on manufacturer hereunder or in connection herewith. Consequential damages for purposes hereof shall include, without limitation (including death) to any person, or loss of or damage to property (including without limitation property handled or processed by the use of goods). Buyer shall indemnify manufacturer against all liability, cost or expense which may be sustained by manufacturer on account of any such loss, damage or injury.

**DEFECTIVE PRODUCTS POLICY.** To obtain performance under this warranty, any product suspected of having a manufacturing defect in materials or workmanship at manufacturers request must be returned to CHERNE INDUSTRIES INCORPORATED, freight prepaid, for inspection. A returned goods authorization must be obtained before shipping any product back to CHERNE. Call 1-800-843-7584 and ask for customer service.

**CUSTOMER TRANSPORTATION REIMBURSEMENT.** Whenever CHERNE repairs or replaces a product at CHERNE'S expense CHERNE will reimburse the distributor by credit memo, the same surface freight amount it cost CHERNE to return the warranty items.

The foregoing warranty is in lieu of all other warranties express or implied, including those of merchantability or fitness for any purpose not expressly set forth herein. No affirmation of manufacturer, by words or action, other than as set forth in this language shall constitute a warranty.